

SMALL SEGMENT BROCHURE



Available in manual (MN) and coin/token (CS) Operated. Specifications are the same

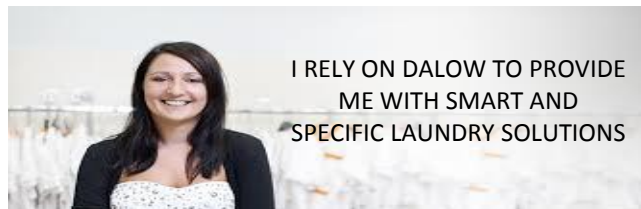
| MODEL | W555H | T5130 | MVW18 MN/CS | MDE18 MN/CS |
|--------------------------|------------------|----------------------|------------------|----------------------|
| CAPACITY | 6kg | 6kg | 8.2kg | 10.5kg |
| BUILD QUALITY | INDUSTRIAL | INDUSTRIAL | COMMERCIAL | COMMERCIAL |
| MACHINE TYPE | WASHER | DRYER | WASHER | DRYER |
| DESIGNED FOR ? CYCLES | 30'000 | 30'000 | 10'000 | 10'000 |
| STACKABLE (EXTRA CHARGE) | YES | YES | NO | NO |
| STAINLESS STEEL DRUM | YES | YES | NO | NO |
| WATER USAGE PER KG | 7.7lt | N/A | 9.15lt | N/A |
| EXTRACTION G FORCE | 530 | N/A | 144 | N/A |
| HEATING | YES | YES | NO | YES |
| DIMENSIONS | 60 x 68 x 83cm | 60 x 73 x 84cm | 73 x 70 x 117cm | 74 x 79 x 115cm |
| WEIGHT | 100kg | 58kg | 63kg | 70kg |
| WATER REQUIREMENTS | 2 x ¾ inch | N/A | 2 x ¾ inch | N/A |
| POWER REQUIREMENTS | 15 amp 240V plug | 30 amp 240V isolator | 15 amp 240V plug | 30 amp 240V isolator |

*MVW18MN and MDE18MN are available in coin or token operation for a small additional fee

POINTS TO REMEMBER:

1. Although more expensive, industrial laundry equipment will give you 3 times the lifespan compared to commercial equipment
2. The washing action in a front loading washer is more vigorous than in a top loading washer resulting in a far better wash result
3. The front loading washer uses FAR less water compared to the top loader and thus, saves you on your monthly costs
4. HEATING – internal heating on the industrial washer allows for far better sanitization of linen and more washing options
5. SPACE SAVING – the industrial washer and dryer can be stacked (purchasing of a stacking bracket required)
6. EXTRACTION – the industrial washer extracts at 530 g force compared to 144 on the top loader. This means less drying time!

RECOMMENDED FOR: Boutique Hotels, B&B's, Laundrettes, Hair Salons, Student Accommodation, Apartment Buildings etc



I RELY ON DALOW TO PROVIDE ME WITH SMART AND SPECIFIC LAUNDRY SOLUTIONS

Auxiliary products

| | | | |
|--|--|---|--|
| <p>DALOW300 GRAVITY FEED, BOTTLE STEAM IRON U/L approved, comfortable urethane handle, ironing surface 120x200mm, 15 amps (240V) plug</p> | <p>DALOW75 1.8LT BOILER STEAM IRON Compact design, fast steam build-up, commercial iron with EPDM hose, 15 amps (240V) plug</p> | <p>DALOW LELIT 2.5LT BOILER STEAM IRON Stainless steel case, 4 safety systems, industrial FS line iron with EPDM hose, 15 amps (240V) plug</p> | <p>DALOW LELIT AUTO FILL BOILER + 2 IRONS Powder coated case, 4 safety systems, 2 x industrial FS line irons with EPDM hoses, 15 amps (380V) isolator</p> |
|  |  |  |  |
| <p>DALOW SILVERSTAR SR5000 CURTAIN/GARMENT STEAMER Pre-heat and steam function, U/L & C.S.A approved, 15 amps (240V) plug</p> | <p>DALOW IBM INDUSTRIAL IRONING BOARD Double upright system – much stronger than X type or single upright systems, surface 1250x450mm</p> | <p>DALOW LBC50 LAUNDRY BIN Polyethylene basket available in blue or red, metal base with 4 x 100mm industrial castors, 50kg/320lt capacity, 1012x705x845mm</p> | <p>DALOW DMR MOBILE HANGING RAIL 1.8m length, mounted on 4 x 50mm industrial rubber castors, fully collapsible</p> |
|  |  |  |  |
| <p>DALOW DIGITAL PLATFORM SCALE Large LCD display, 150kg capacity, 15amp (240V) plug</p> | <p>DALOW STAINLESS STEEL TABLES Ideal for folding linen, available in 650, 900, 1100, 1700, 2300mm Optional undershelf available</p> | <p>DALOW BLANCPRESS TABLE TOP PRESS Ironing surface 80x30cm, temperature range 50-170, 1800W heating element, 15 amp (240V) plug</p> | <p>DALOW BLANCPRESS TABLE TOP PRESS Ironing surface 120x30cm, temperature range 50-170, 2640W heating element, 15 amp (240V) plug</p> |
|  |  |  |  |

DALOW – the family business specialising in laundry and catering equipment – SALES – SERVICE - REPAIRS – SPARE PARTS